

## INTERGRATED FERTILISER MANAGEMENT FOR RICE

### 'Two Mix Three Spray' Program Delivers 39% Increase in Yield

Authorised for release by :

**Melanie Wu,**  
 Deputy General Manager, RLF China,  
 and translated by Echo Dong

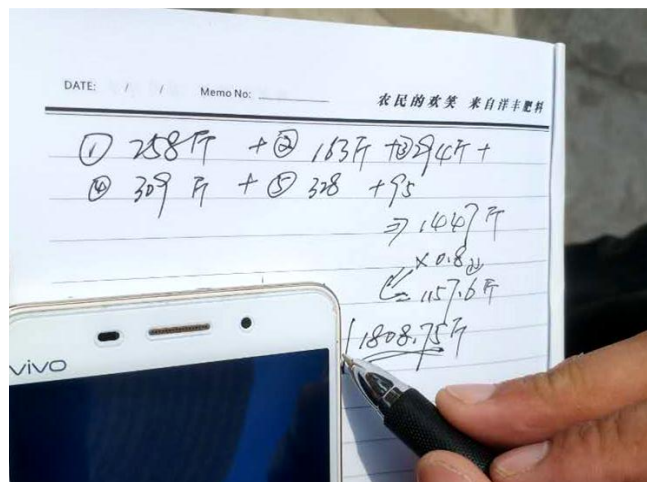
RLF recently organised a rice production measurement observation meeting in Nanyang Village, Zhangtiansi Town, Gonggan County, Jingzhou City, Hubei Province. Yield measurement results, showed that the rice treated with the RLF's **BSN Superstrike** and RLF's Ultra Foliar **Broadacre Plus** increased yield by 513 jin (257 kg) per 1000 sqm land. This equated to a 39% yield growth rate, and about 450 yuan (88 \$AU) increase in value. In one word, the effect of increasing production and income is **SIGNIFICANT**.

**39%**   
**Yield Growth**

	Yield for 1000 square land (jin)	Growth Rate
Control	1,295	
RLF treated	1,808	39%

#### The Results Observed.

Based on the measurement statistics, the Control field produced 1,295 jin (648 kg) per 1000 sq land, with the RLF-treated rice field producing 1,808 jin (904 kg) per 1000 sq land. This equates to a 39% yield increase, and approximately 450 yuan (88 \$AU) yield increase in value per 1000 sq. At the same time, the application of two mix and three spray on rice has the features of full rice, less empty grains and obvious anti-adversity effect.



### Details of the Test Site & Program

RLF Sales Manager in Hubei Province, Bai Yigen, recorded the application effects of the RLF Integrated Fertiliser Management program for rice on 16th July 2017. Locally it is called the two mix and three spray program.

Seed Priming Date	23rd March 2017
Germination Date	24th March 2017
Observation Dates	27th April 2017, 22nd May 2017 and 8th July 2017
Test Location	Nanyang Village, Zhangtiansi Town, Gonggan County, Jingzhou City, Hubei Province.
Rice Variety	Early season rice, Zhifu 6.
Demonstration Farmer	Yang Xiancai
The Product used and Application Program	<b>First</b> Apply 100ml <b>BSN Superstrike</b> to 500ml water for 20 Jin (10 kg) rice seed and mix evenly with hands until all seed is covered.  <b>Second</b> Apply 40ml <b>Broadacre Plus</b> to 30 jin (15 litres) water for each mu of land and foliar spray onto the crop.
Test method	Select two adjacent paddy fields sown with early season rice for comparison. The Control field was sown 3 days ahead of the demonstration field. The observation and comparison times were carried out at three leaves and one heart period, elongation stage and harvest period of rice.

## Observation Phase 1. The Three Leaves and One Heart Period of Rice



*The demonstration field*

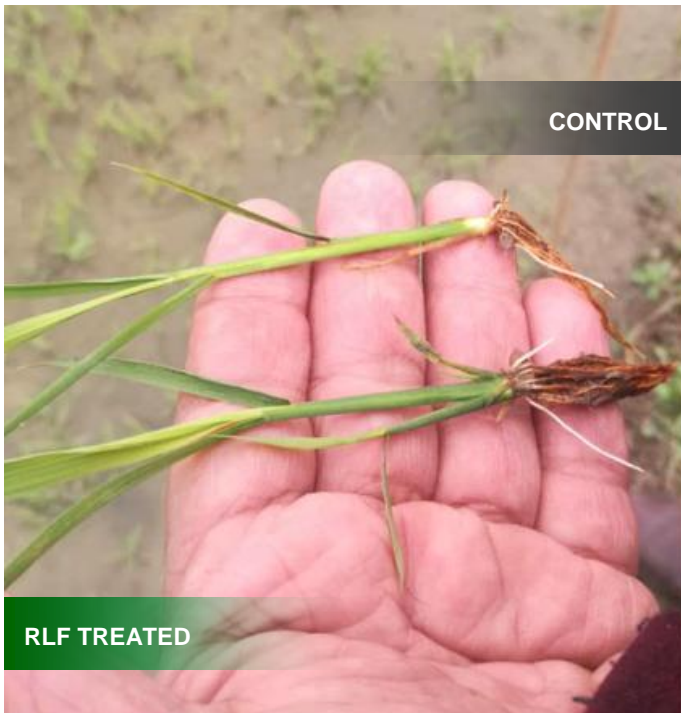
## Comparison on Root System



The rice field treated with the two mix and three spray program show highly significant effects. The plants formed a thick and strong root system, and there were many white roots as well as fine roots putting themselves down into the soil. These all play an important role in supporting the rice crop and guarding it against future drought or lodging resistance. Strong and healthy root systems set the plant up for excellent grain set and yield performance.



### Comparison on the Thickness of the Stems



When measured, the rice stem that was treated with **RLF products** was **0.5mm thicker** than the Control rice plant.

### Comparison on the Number of Tillers

The rice field treated with the RLF Integrated Fertiliser Program had earlier tiller growth.

Almost all of the rice germinated with at least one tiller – but most with more than one. Some had up to three at the three leaves and one heart phase of rice growth. Importantly, the tillers were all healthy and strong. There were no dead tillers affected by low temperature, and the first leaf of the rice seedling is light green.

In comparison, only some of the Control rice crop showed tiller growth, with many going on to become ineffective tillers because of the low temperature. Often the first leaf of tillering withered and died.

### Summarising the Three Leaves and One Heart Phase

By comparing the root, tiller growth and seedling potential, the rice two mix and three spray program had significantly better characteristics and effects.

These were:

- ✓ the development of vigorous root systems with healthy white roots as well as fine hair roots
- ✓ earlier, and stronger tiller growth with good cold and drought resistant effect
- ✓ vigorous and even seedling growth with healthy and lasting top growth



Observation Phase 2. The Elongation Stage of Rice.





Observation Phase 3. The Harvest Time of Rice







#### Rice Yield Measurement

	Thousand seed weight (g)	Increased Rate
Control	20	
RLF treated	25.5	28%



The Demonstration Field at Harvest Time



## The Products Used

### BSN Superstrike

Fertiliser for Seeds. The engineered delivery system allows seed to absorb a multi-nutrient formulation with increased phosphorus. High-analysis and Broad-spectrum.

- ✓ easy to apply with quick uptake of nutrient
- ✓ 'kick-starts' germination
- ✓ supplies energy for robust early growth and setting higher yield potential new world standard for modern-farming practice



### Broadacre Plus Ultra Foliar

Ultra Foliar Fertiliser with 12 essential nutrients. Taken up by the leaf through the cell walls for the plant's immediate use. High-analysis and Broad-spectrum for all broadacre crops.

- ✓ increases growth and improves yield qualities
- ✓ guards against soil nutrient variability and deficiency
- ✓ delivers a greater size and volume root system
- ✓ returns more matter to the soil enhancing natural soil fertility



The content of this media page was accurate and current at the time that it was written. This media release is provided for interested customers and other parties, and will remain a matter of RLF's historical record. Viewed in this context RLF therefore undertakes no obligation to update either material or content.