

EARLIER COLOUR AND QUICKER TO MARKET

How RLF Crop Nutrition Products give Grower Success

Authorised for release by :

Melanie Wu,
 Deputy General Manager, RLF China,
 and translated by Echo Dong

Cherry is a Complex Fruit

Cherry has the reputation of being the first fruit in spring. It is eagerly awaited by the market and has high economic benefit for growers.

Fruit colouring, firmness and glossiness are all indicators of cherry quality. After entering the fruiting stage, if the cultivation and management cannot keep pace, it is easy for the phenomenon of 'multiple flowers, less fruit, poor quality, and even full bloom and fruitlessness' to result. This is a lot of investment for often low crop return and income.



Mouth-watering cherries

If cherry growers want to get fruit setting in large quantities, big fruit and early colouring, the fertilisation management program must be managed well. Early listing of produce can catch the early market excitement.

The RLF Fertiliser Management Program

The Sales Manager in Liaoning Province, Zhang Zhen paid a visit to the cherry growers in Sanjiatun Village, (Liguan Town, Wafangdian County, Dalian City), Liaoning Province to measure the success and outcomes of the crop following the crop nutrition application.



The details of the crop nutrition program are as follows:

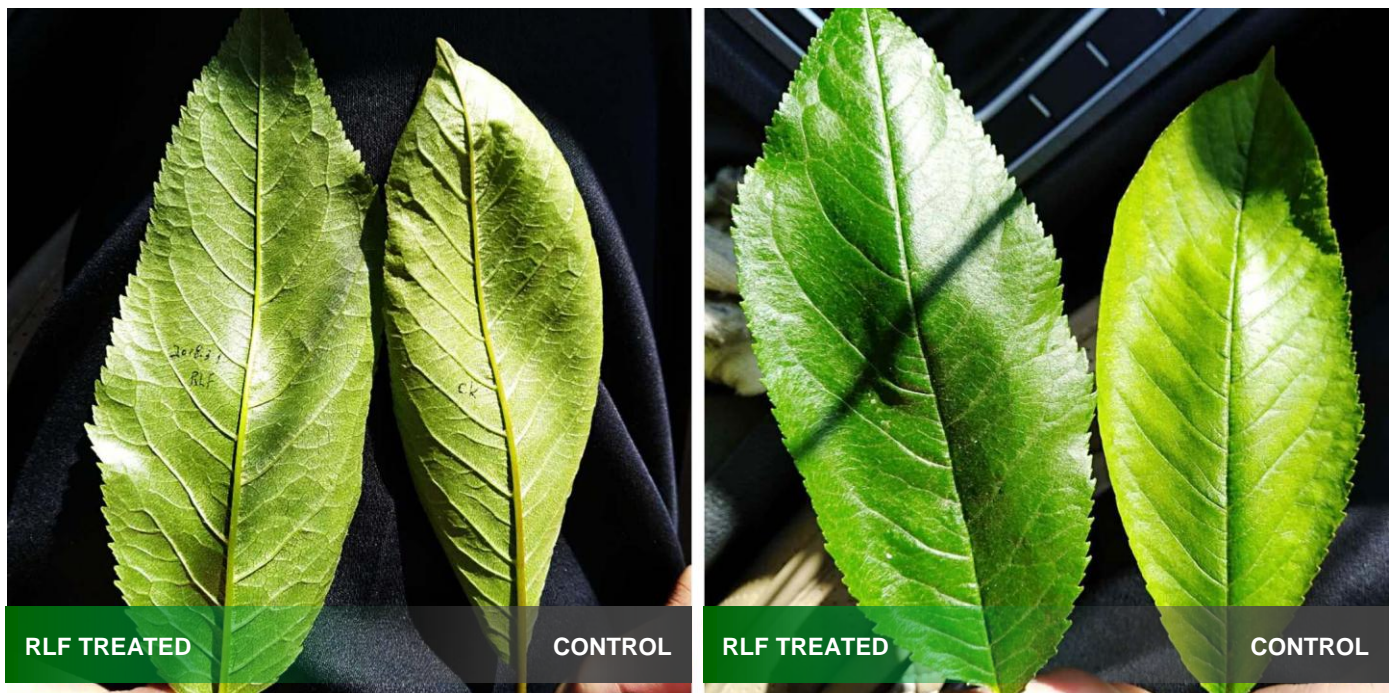
Inspection Date	4th March 2018
Grower Location	Sanjiatun Village, Liguan Town, Wafangdian County, Dalian City, Liaoning Province
Grower	Zhao Xueben
Products Used	Plant Milk High-N and Dynamo High-P
Experimental Subjects	Ten trees of the cherry variety Meizao, aged 12 years
Method Used	Apply with 500ml of Plant Milk High-N and 100ml of Dynamo High-P on each cherry tree with 500-800 times dilution injected into the ground of each plant hole
Application Dates	31st January 2018 and 12th February 2018



RLF Sales Manager demonstrates how to use RLF products to the cherry growers

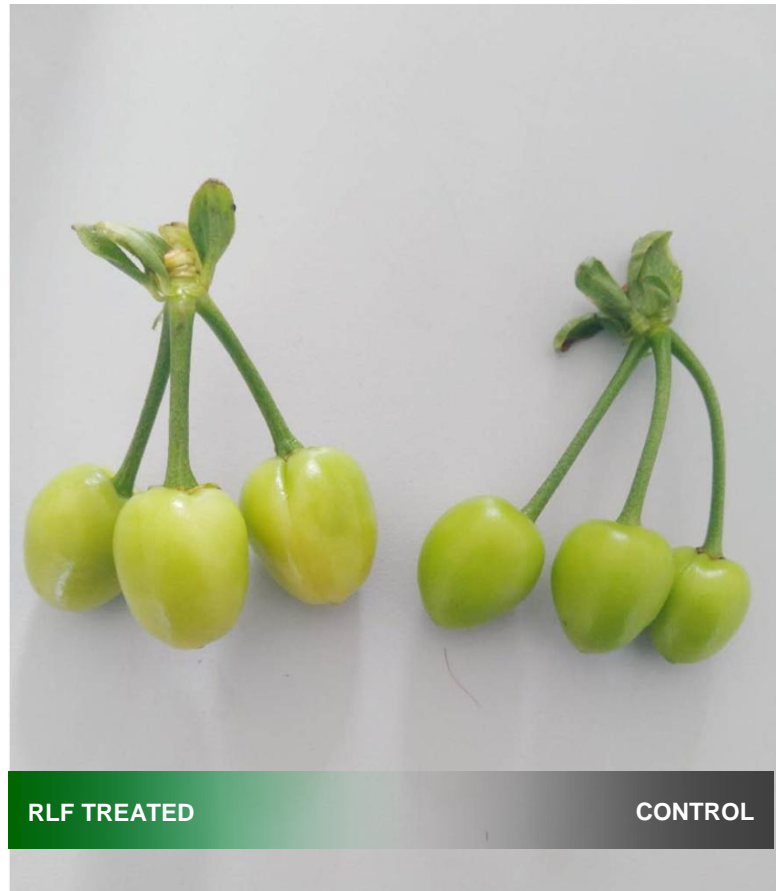
After using **Plant Milk High-N** and **Dynamo High-P** on these two occasions the application effects were as follows:

The Comparison of the Surface of the Leaf



The cherry leaves treated with the RLF **Plant Milk High-N** and **Dynamo High-P** have darker and brighter colour, larger leaves and more obvious veins.

The Comparison of the Fruit



Green and vibrant cherries

The cherry trees treated with RLF products are green and vibrant. The round sparkling cherry trees are full of branches.

When compared with the Control cherry tree, the tree treated with the RLF products is bright and shiny and has better maturity.

Visit to the Site



Visitors to the cherry orchard can already see that some cherries are beginning to colour. The fruit setting rate is high, the size of the cherry fruit is large, the colour is bright and this makes people's mouths water – they all look forward to the cherry picking season!

The Experience of a Second Cherry Grower

Inspection Date	4th March 2018
Grower Location	Jiatun Village, (Liguan Town, Wafangdian County, Dalian City), Liaoning Province
Growers	Wu Zhenyi and Wang Desheng
Products Used	Plant Milk High-N and Dynamo High-P
Experimental Subjects	Twenty trees of the cherry variety Meizao, aged 5 years
Method Used	Apply with 200ml of Plant Milk High-N and 100ml of Dynamo High-P on each cherry tree with 500-800 times dilution injected into the ground of each plant hole
Application Dates	29th January 2018 and 18th February 2018

The On-site Visit



At the scene, the cherry growers shared their planting experiences about the RLF crop nutrition program and products. Much discussion took place about cherry planting problems and methods and the atmosphere of the discussions was warmly received.

Observation of the cherry trees confirmed that the fruits were large and bright, and the experimental results very encouraging.



The Cherry Growers are satisfied with the RLF crop nutrition program and products

The Products Used



[Click here to visit product page](#)



[Click here to visit product page](#)



The content of this media page was accurate and current at the time that it was written. This media release is provided for interested customers and other parties, and will remain a matter of RLF's historical record. Viewed in this context RLF therefore undertakes no obligation to update either material or content.