

## HONEY POMELO GROWS BETTER WITH RLF PRODUCTS

### The Grower Shares his Crop's Comparisons

Authorised for release by:

**Melanie Wu,**  
Deputy General Manager, RLF China,  
and translated by Echo Dong

Meizhou is known as the 'Hometown of Chinese Golden Pomelo' and has a long history of pomelo cultivation.

Grower Mr Li, used an RLF crop nutrition program for his 20mu (1.33 hectare) pomelo orchard this year. The following comparisons show the effects of this specialty fertiliser program.



### Demonstration Test Details

<b>Test Crop</b>	Honey Pomelo
<b>Test Location</b>	Songkou Town, Mei Count, Guangxi
<b>Test Grower</b>	Li Jianxiang



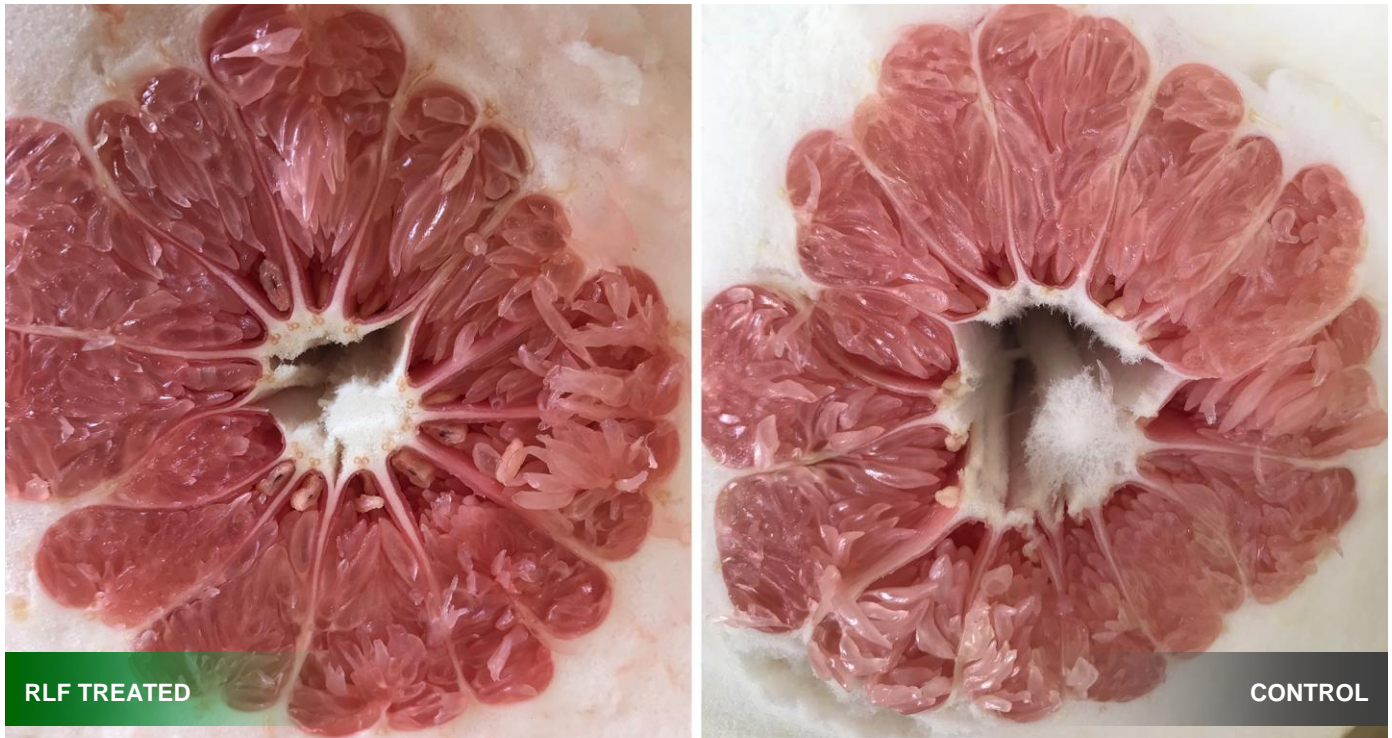
### The RLF Crop Nutrition Program

Timing	Products & Rates Applied
<b>Budding Stage</b>	<b>Boron Plus</b> 1:1000 Foliar application to the leaf
<b>Young Fruit Stage</b>	<b>Ultra 12</b> 1:1000 Foliar application to the leaf
	<b>Calcium Plus</b> 1:000 Foliar application to the leaf
<b>Filling Stage</b>	<b>Boron Plus</b> 1:1000 Foliar application to the leaf
	<b>Plant Milk High-K</b> 1:300 Fertigation



## The Comparison on Colour Changing

On a return visit on 27th July 2018, it was found that the honey pomelo treated with RLF products had early fruit swelling. Whether it be fruit appearance or flesh colour, the colour change was good and even. At the later stage, the average single fruit weight of pomelo was about 3kg, and the proportion of the whole commercial fruit reached 95%.



As observed in July 2018



As observed in September 2018



## The Comparison on Sugar Content



The sugar content measurement result of pomelo on 27th July 2018 was Control 8.5 and the RLF-treated fruit was 9.3.



The sugar content measurement result of the honey pomelo on 14th September 2018, Control was 12.3 and the RLF-treated fruit was 13.0.



Mr Li's pomelo orchards are mostly four-year-old trees, with a yield of approximately 60,000kg. The rate of inferior fruit was less than 1%. Because of its beautiful appearance, high sugar content and good colour, the purchase price given this year was 5 yuan (1.05AUD)/kg. According to the survey, the purchase price of the nearby honey pomelo with conventional management was 3.4 yuan (0.71AUD)/kg.

Once inputs are subtracted from the income, the profit is about 80,000 yuan (16,989AUD) when compared with the conventional fertiliser management.

Mr Li is very satisfied with the application effects of RLF crop nutrition products.



**Mr Li with his successful crop of honey pomelo**



**The pomelo orchard applied with RLF products**

## Summary

The results showed that the application of RLF products in different growth stages of pomelo had an obvious effect on promoting the colour change of pomelo after bagging and improving the sugar content.

As is shown by Mr Li's experience, RLF products effectively improve the commodity value of pomelo and improve the income of fruit growers. This is an excellent result.

The content of this media page was accurate and current at the time that it was written. This media release is provided for interested customers and other parties, and will remain a matter of RLF's historical record. Viewed in this context RLF therefore undertakes no obligation to update either material or content.